

WGS 84 POSITIONS can be plotted directly on this chart

RIVER HUMBER OLD HARBOUR TO BARTON HAVEN

DEPTHS IN METRES
SCALE 1 : 10000

SURVEYED BY
Harbour Master, Humber
ASSOCIATED BRITISH PORTS
15th August 2017

Depths are in metres and decimetres reduced to the chart datum given below
Underlined figures are drying heights in metres and decimetres above chart datum
Overhead clearance heights are above Highest Astronomical Tide

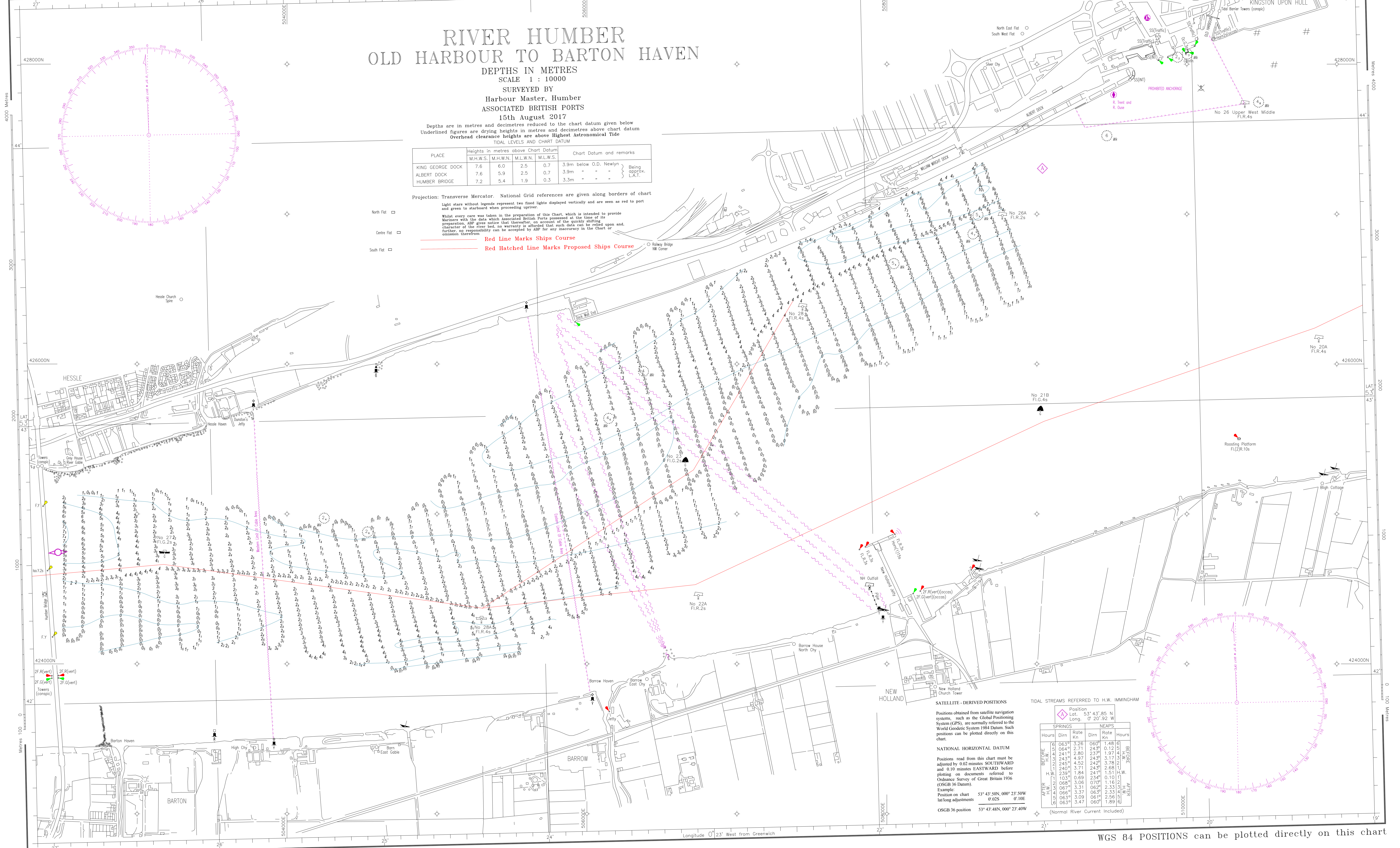
PLACE	Heights in metres above Chart Datum				Chart Datum and remarks
	M.H.W.S.	M.H.W.N.	M.L.W.N.	M.L.W.S.	
KING GEORGE DOCK	7.6	6.0	2.5	0.7	3.9m below O.D. Newlyn
ALBERT DOCK	7.6	5.9	2.5	0.7	3.9m - - - } Being approx. L.A.T.
HUMBER BRIDGE	7.2	5.4	1.9	0.3	3.3m - - -

Projection: Transverse Mercator. National Grid references are given along borders of chart
Light stars without legends represent two fixed lights displayed vertically and are seen as red to port and green to starboard when proceeding upriver.

Whilst every care was taken in the preparation of this Chart, which is intended to provide Mariners with the data which Associated British Ports possessed at the time of its preparation, ABP gives notice that, in view of the constantly changing character of the river bed, no warranty is afforded that such data can be relied upon and, further, no responsibility can be accepted by ABP for any inaccuracy in the Chart or omission therefrom.

Red Line Marks Ships Course
Red Hatched Line Marks Proposed Ships Course

- North Flat
- Centre Flat
- South Flat



SATELLITE - DERIVED POSITIONS

Positions obtained from satellite navigation systems, such as the Global Positioning System (GPS), are normally referred to the World Geodetic System 1984 Datum. Such positions can be plotted directly on this chart.

NATIONAL HORIZONTAL DATUM

Positions read from this chart must be adjusted by 0.02 minutes SOUTHWARD and 0.10 minutes EASTWARD before plotting on documents referred to Ordnance Survey of Great Britain 1956 (OSGB 36 Datum).
Example:
Position on chart 53° 41' 30N, 000° 23' 50W
lat/long adjustments 0.02S 0.10E
OSGB 36 position 53° 41' 28N, 000° 23' 40W

TIDAL STREAMS REFERRED TO H.W. IMMINGHAM

SPRINGS	Position		NEAPS	
	Hours	Dirn	Rate kn	Dirn
BRESLE	06:30	3.26	06:00	1.48
	06:45	2.71	24:30	0.12
	07:00	2.80	23:00	1.92
	07:15	2.43	24:30	3.17
HUMBER	06:30	4.97	24:30	3.78
	06:45	4.52	24:30	2.88
	07:00	3.71	24:30	2.68
	07:15	1.84	24:15	1.51
AFTER	06:30	0.68	23:45	0.10
	06:45	3.06	07:00	1.16
	06:50	3.31	06:20	2.33
	06:55	3.37	06:20	2.56
07:00	3.09	06:15	2.56	
07:05	3.47	06:00	1.89	

WGS 84 POSITIONS can be plotted directly on this chart